

TECHNICAL INFORMATION SHEET

No. 0507-02
2-Aug-05

CINO XS PB Possible damage to Coffee Chute

This information is provided so that in the event of damage to the Coffee Chute on the Cino XS – PB preventative measures can be taken to ensure it does not reoccur.

Fig. 1 shows the Coffee Chute and where it is located on the brewer, the part number for it is: 0250008036



Fig. 1 Coffee Chute

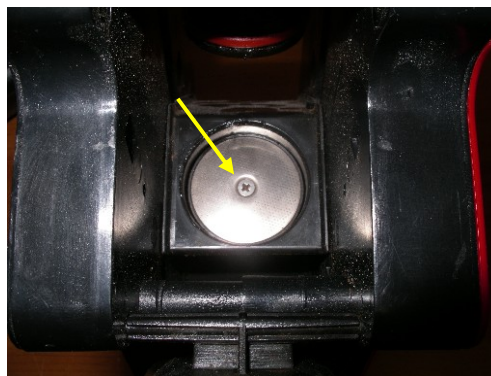


Fig. 2 Filter Screw

Damage to the Coffee Chute may occur if the Filter Screw (Fig. 2) is not tight or the Plunger Rod not securely fastened onto the Roll Support at the base of the brewer (Fig. 3)

In this circumstance, the plunger may protrude above the lip of the brewing chamber and catch against the base of the Coffee Chute (Fig. 4) at the end of the brew cycle as the coffee cake is discarded.

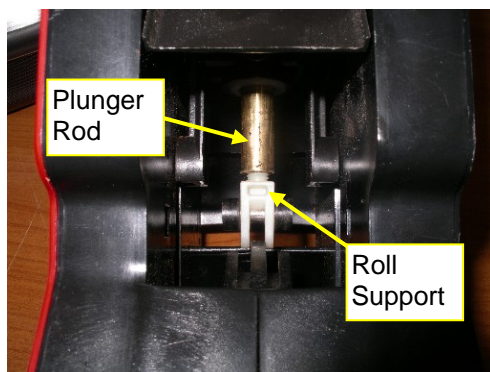


Fig. 3 Plunger Rod

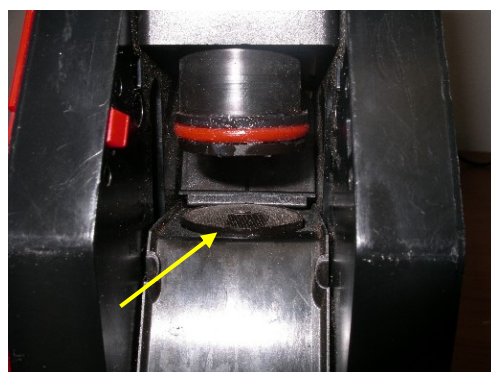


Fig. 4 Protruding plunger

If replacing a damaged Coffee Chute, to prevent damage from re-occurring ensure that:
a) The Plunger Rod is fastened securely to the Roll Support, and that b) The Filter Screw is tight.

It is suggested that these components are regularly inspected as part of routine machine maintenance.